



# JOSPER CHARCOAL BROILER OVEN HJX

|                                 |                |                  |
|---------------------------------|----------------|------------------|
| Recommended for ±               | 175 diners     |                  |
| Fire up time                    | 40 min average |                  |
| Charcoal daily consumption      | 16 to 20 kg    | 35 to 44 lb      |
| Performance                     | 9h             |                  |
| Production per hour             | 110 kg average | 242.5 lb average |
| Broiling temperature            | 250 to 350 °C  | 482 to 662 °F    |
| Grill rack capacity in GN trays | 2xGN1/1        |                  |
| Nominal heat output             | 9,6 kW         | 12.9 hp          |
| Flue gas mass flow              | 23,57 g/s      | 0.83 oz/s        |
| Net weight                      | 313 kg         | 690 lb           |

## HJX-50-MBC

Josper is an elegant combination of a grill and an oven in a single machine. It works 100% with charcoal. A unique closed barbecue design. Different levels of grilling. Flexible and robust, easy to use, with a front opening door system. Vent system for temperature control.

By bringing the added value that comes from the firewood (charcoal) to the raw material, we obtain those flavours of yesterday, as well as a perfect texture and juiciness. By combining the functions of an oven and grill, we can work at high temperatures, sealing the product, smoking and grilling at the same time. These results are unique, and make the Josper Charcoal Oven a piece of equipment that is also unique.

### ACCESSORIES NOT INCLUDED

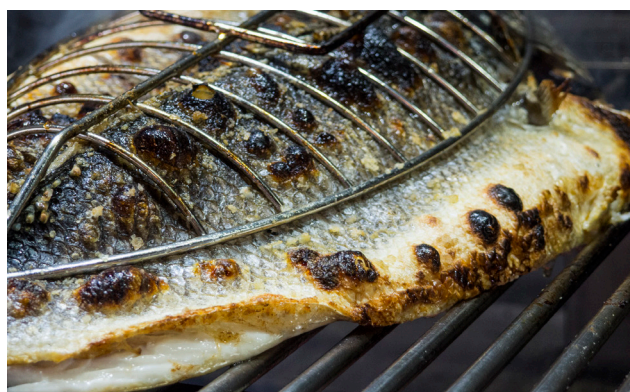
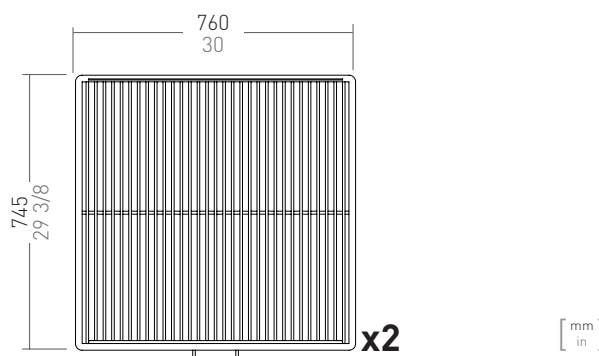
1 Grill rack · Firebreak · Firebreak hat

### INSTALLATION

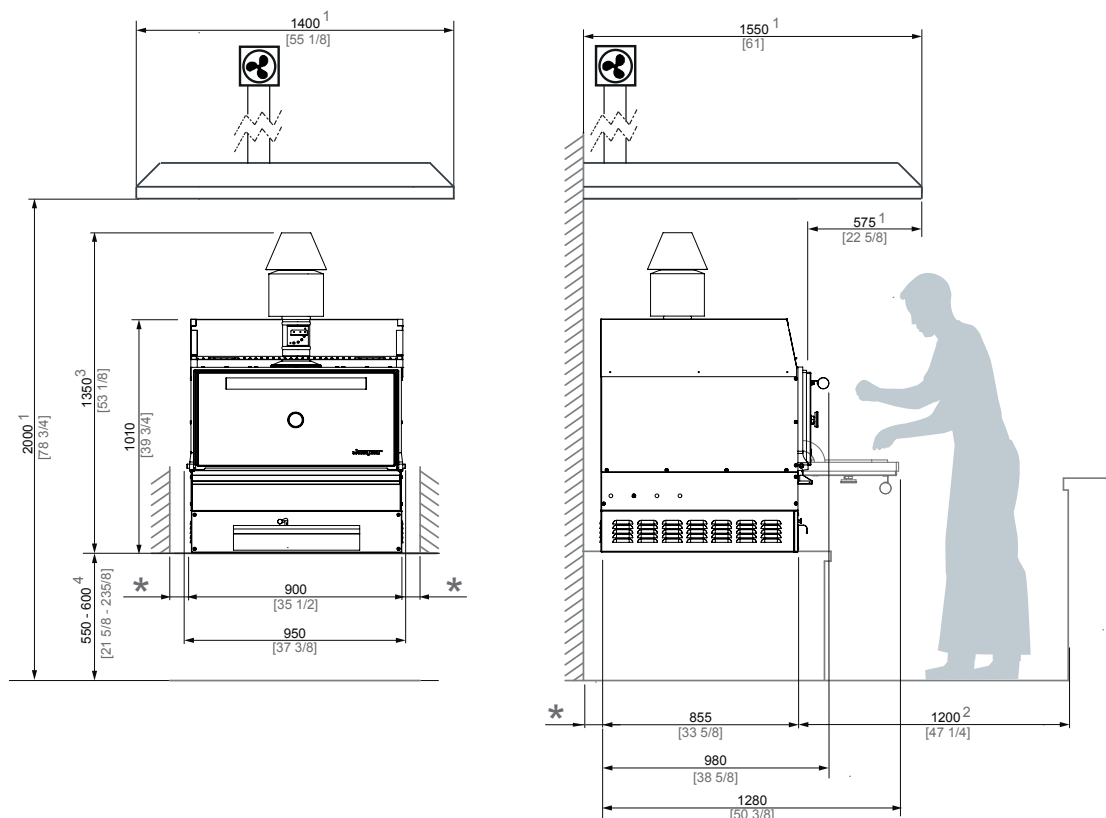
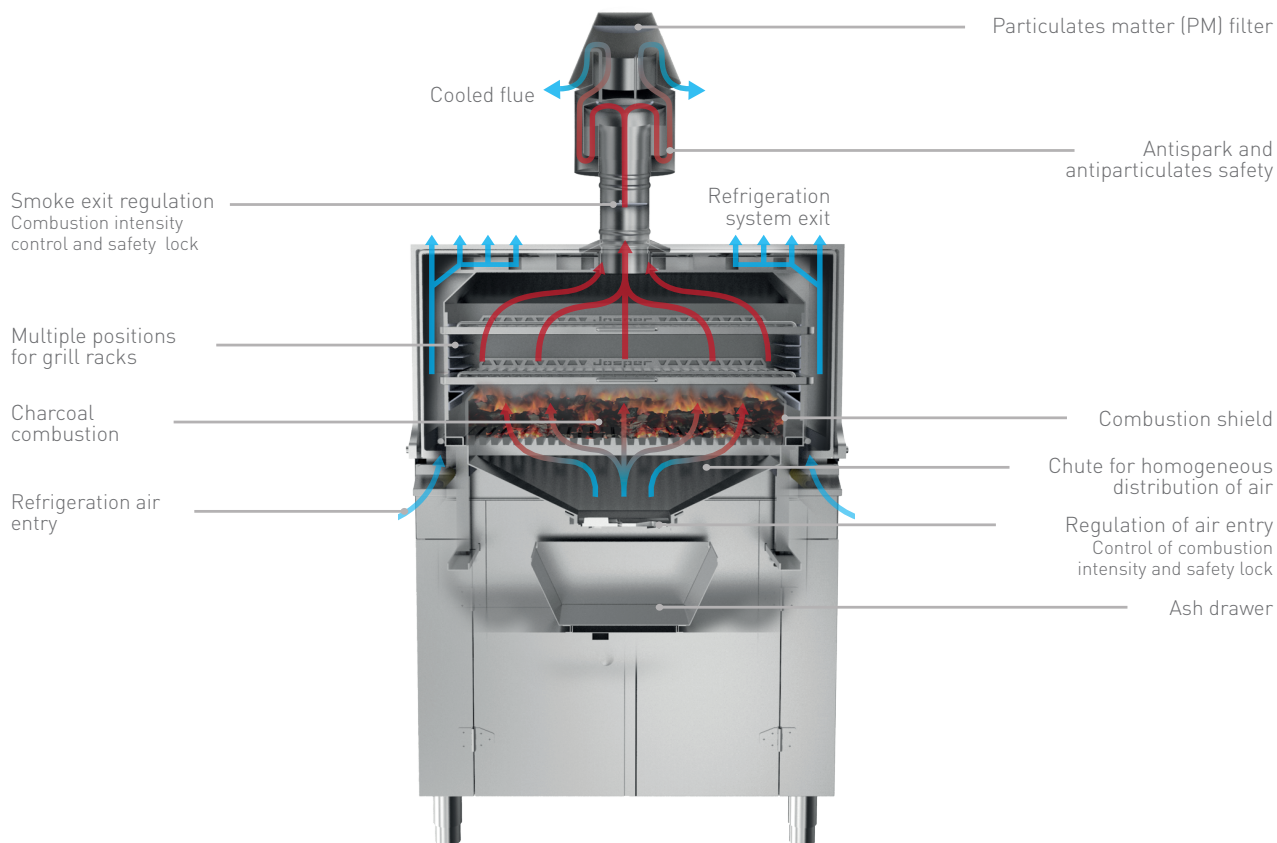
|  |                        |           |
|--|------------------------|-----------|
| Recommended installation height        | 550 mm                 | 21 5/8 in |
| Clearance with non-flammable equipment | 100 mm                 | 4 in      |
| Clearance with flammable equipment     | 300 mm                 | 12 in     |
| Exhaust rate                           | 3800 m <sup>3</sup> /h | 2237 cfm  |

### BUNDLES: SIZES AND WEIGHTS

|                     |        |          |
|---------------------|--------|----------|
| Sizes bundle        | -      | -        |
| Gross weight bundle | 332 kg | 731.9 lb |



Ed.05.2019 - Josper reserves the right to make modifications to catalogues, pricelists and promotional material according to the development and improvements applied to its equipment.



\* MINIMUM DISTANCE TO FLAMMABLE ELEMENTS: 300 mm [12 in] / RECOMMENDED DISTANCE TO ANOTHER ELEMENTS: 100 mm [4 in]

1 RECOMMENDED HOOD'S MINIMUM DIMENSIONS

2 RECOMMENDED CHEF'S WORKING SPACE

3 THIS DISTANCE MAY BE MODIFIED BY THE SMOKE OUTLET SET CONFIGURATION.

4 RECOMMENDED INSTALLATION HEIGHT.

[ mm  
in ]